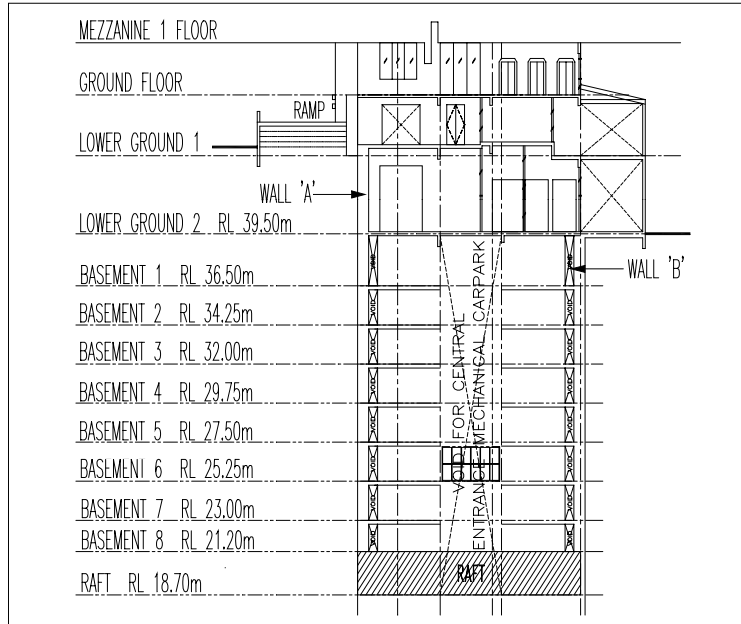


PROJECT :-

DEEP BASEMENT EXCAVATION USING TOP DOWN METHOD, 1998

The site is located between Jalan P. Ramlee and Jalan Puncak that leads to the KL Tower. The site is in the Kenny Hill formation.

The project comprises a 27-storey block for luxurious apartments and a deep basement car park. The basement consists of an 8 level mechanical car park with a void in the centre for the movement of the car lift. The high rise building is supported by a 2.5m thick raft without any pile. The basement excavation was generally 21.0m to 27.0m deep, one of the deepest in Kuala Lumpur. The excavation was retained by diaphragm walls of 0.8 m and 1.0 m thick.



In view of the congested site and close proximity of neighbouring buildings and roads, the performance of the retaining walls and stability of the deep basement excavation was of utmost importance. A safe and optimum design was achieved through comprehensive modelling and analysis based on our vast experience in similar soils. The performance of the design was verified by instrumentation and monitoring. The basement construction started in February 1997 and finished in August 1998.

